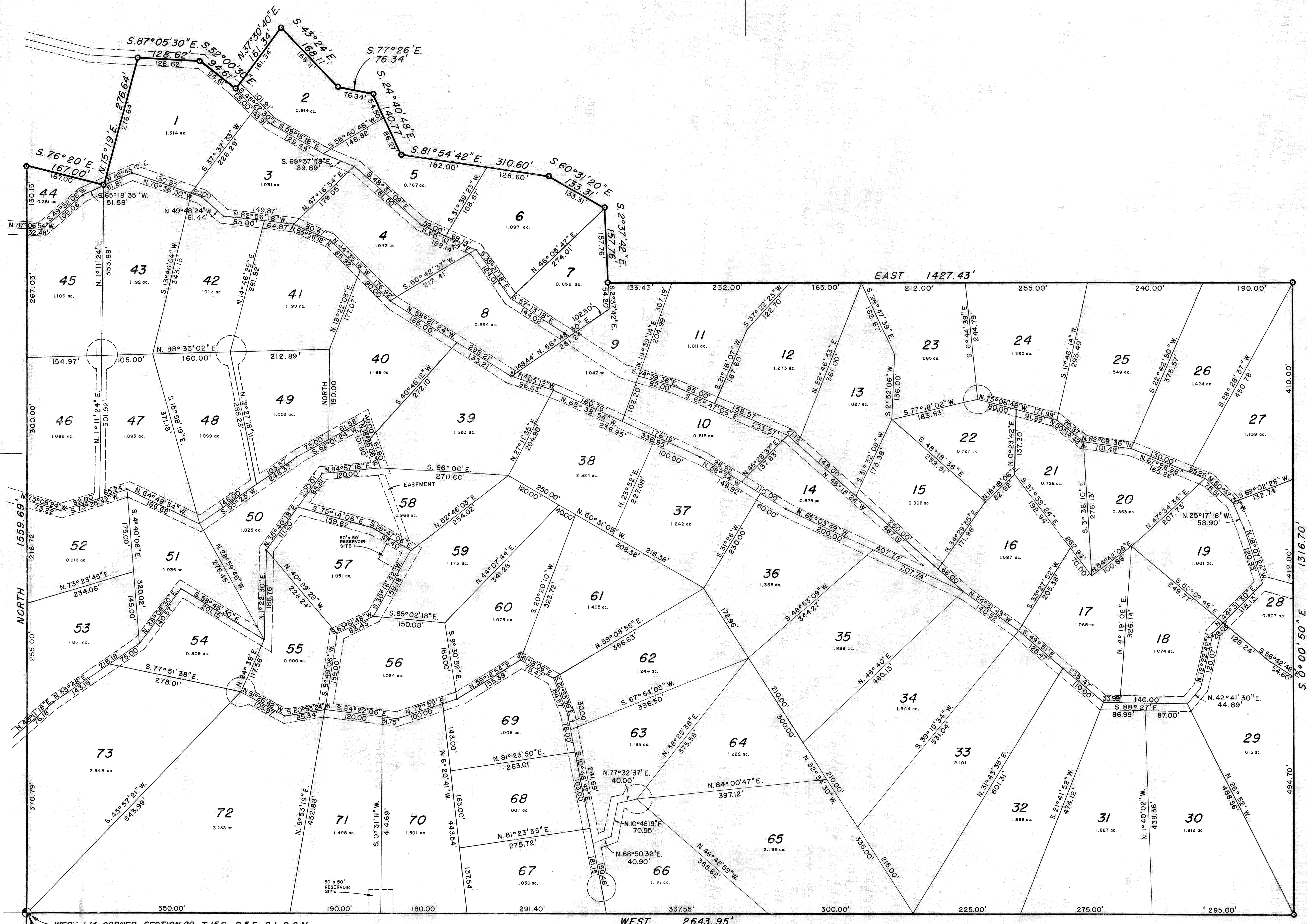
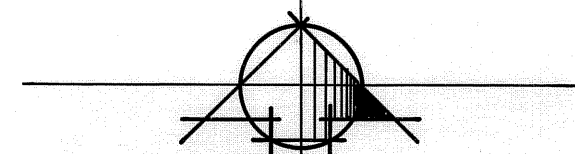


NORTH



WEST 1/4 CORNER, SECTION 29, T.15 S., R.5 E., S.L.B. & M.
POINT OF BEGINNING

WEST 2643.95'

ENTRY NO. 233307
RECORDED 8-11-76 4 2
REQUEST OF Pine Creek Ranch
FEE PAID JACKSON WALKER REGISTERED CLERK-RECORDER
146.00
John Walker DEPUTY

PREPARED BY
GOTTFREDSON, JUESCHKE & ASSOC.
CONSULTING ENGINEERS & LAND SURVEYORS
PROVO, UTAH (801) 374-2939

SURVEYOR'S CERTIFICATE

I, LYNN P. GOTTFREDSON, DO HEREBY CERTIFY THAT I AM A REGISTERED LAND SURVEYOR, AND THAT I HOLD CERTIFICATE NO. 3495. AS PRESCRIBED UNDER THE LAWS OF THE STATE OF UTAH, I FURTHER CERTIFY BY AUTHORITY OF THE OWNERS, I HAVE MADE A SURVEY OF THE TRACT OF LAND SHOWN ON THIS PLAT AND DESCRIBED BELOW, AND HAVE SUBDIVIDED SAID TRACT OF LAND INTO LOTS, BLOCKS, STREETS, AND EASEMENTS AND THE SAME HAS BEEN CORRECTLY SURVEYED AND STAKED ON THE GROUND AS SHOWN ON THIS PLAT AND THAT THIS PLAT IS TRUE AND CORRECT.

BOUNDARY DESCRIPTION

COMMENCING AT THE WEST 1/4 CORNER OF SECTION 29, T.15 S., R.5 E.,

SALT LAKE BASE & MERIDIAN, THENCE AS FOLLOWS:

COURSE	DISTANCE	REMARKS
NORTH	1559.69'	ALONG THE SECTION LINE
S. 76° 20' E.	167.00'	
N. 15° 19' E.	276.64'	
S. 87° 05' 30" E.	128.62'	
S. 52° 00' 30" E.	94.61'	
N. 37° 30' 40" E.	161.34'	
S. 43° 24' E.	168.11'	
S. 77° 26' E.	76.34'	
S. 24° 40' 48" E.	140.77'	
S. 81° 54' 42" E.	310.60'	
S. 60° 31' 20" E.	133.31'	
S. 2° 37' 42" E.	157.76'	
EAST	1427.43'	ALONG SOUTH LINE OF PINE CREEK VISTA SUBDIVISION
S. 02° 00' 30" E.	1316.70'	ALONG THE QUARTER SECTION LINE
WEST	2643.95'	ALONG THE QUARTER SECTION LINE TO THE POINT OF BEGINNING.

BASIS OF BEARING = NORTH ALONG SECTION LINE

7-23-76
DATE
Lynn P. Gottfredson
SURVEYOR
(See Seal Below)

OWNERS' DEDICATION

KNOW ALL MEN BY THESE PRESENTS THAT WE, ALL OF THE UNDERSIGNED OWNERS OF ALL OF THE PROPERTY DESCRIBED IN THE SURVEYOR'S CERTIFICATE HEREON AND SHOWN ON THIS MAP, HAVE CAUSED THE SAME TO BE SUBDIVIDED INTO LOTS, BLOCKS, & EASEMENTS AND DO HEREBY DEDICATE THE EASEMENTS FOR THE EXCLUSIVE USE OF THE OWNERS AND CERTAIN UTILITY COMPANIES AS SPECIFIED ON THE ACCOMPANYING SURVEY PLAT.
IN WITNESS WHEREOF WE HAVE HEREUNTO SET OUR HANDS THIS 11th DAY OF August, A.D. 1976

PINE CREEK RANCH, A UTAH CORPORATION
Shirley L. ...
Lynn P. Gottfredson
SURVEYOR

ACKNOWLEDGEMENT

STATE OF UTAH }
COUNTY OF SANPETE } S.S.
ON THE 11th DAY OF August, A.D. 1976, PERSONALLY APPEARED BEFORE ME THE SIGNERS OF THE FOREGOING DEDICATION WHO BUT ACKNOWLEDGE TO ME THAT THEY DID EXECUTE THE SAME.
MY COMMISSION EXPIRES Nov. 11, 1978
Notary Public
(See Seal Below)

ACCEPTANCE BY LEGISLATIVE BODY

THE COUNTY COMMISSION OF SANPETE COUNTY, UTAH, APPROVES THIS SUBDIVISION AND HEREBY ACCEPTS THE DEDICATION OF ALL STREETS, EASEMENTS, AND OTHER PARCELS OF LAND INTENDED FOR PUBLIC PURPOSES FOR THE PERPETUAL USE OF THE PUBLIC THIS DAY OF August, A.D. 1976.

APPROVED: ENGINEER (See Seal Below)
ATTEST: Clerk-Recorder (See Seal Below)

BOARD OF HEALTH

APPROVED SUBJECT TO THE FOLLOWING CONDITIONS: all utility and local water, sewer, and regulations.
Health Department

PLANNING COMMISSION APPROVAL

APPROVED THIS 11th DAY OF August, A.D. 1976, BY THE SANPETE COUNTY PLANNING COMMISSION
Chairman, Planning Commission

PINE CREEK ACRES

A SUMMER HOME SUBDIVISION IN SANPETE COUNTY UTAH
SCALE: 1" = 100'

SURVEYOR'S SEAL: Lynn P. Gottfredson, State of Utah

NOTARY PUBLIC SEAL: State of Utah

CITY-COUNTY ENGINEER SEAL: State of Utah

CLERK-RECORDER SEAL: State of Utah

PREPARED BY: GOTTFREDSON, JUESCHKE & ASSOC. CONSULTING ENGINEERS & LAND SURVEYORS, PROVO, UTAH (801) 374-2939

This form approved by Utah County and the municipalities therein.